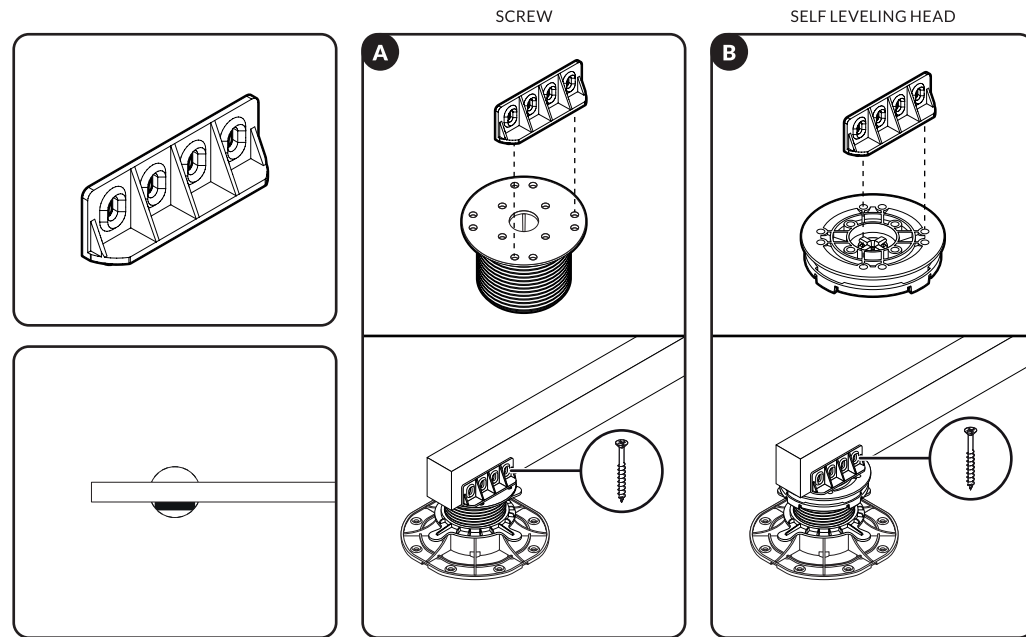
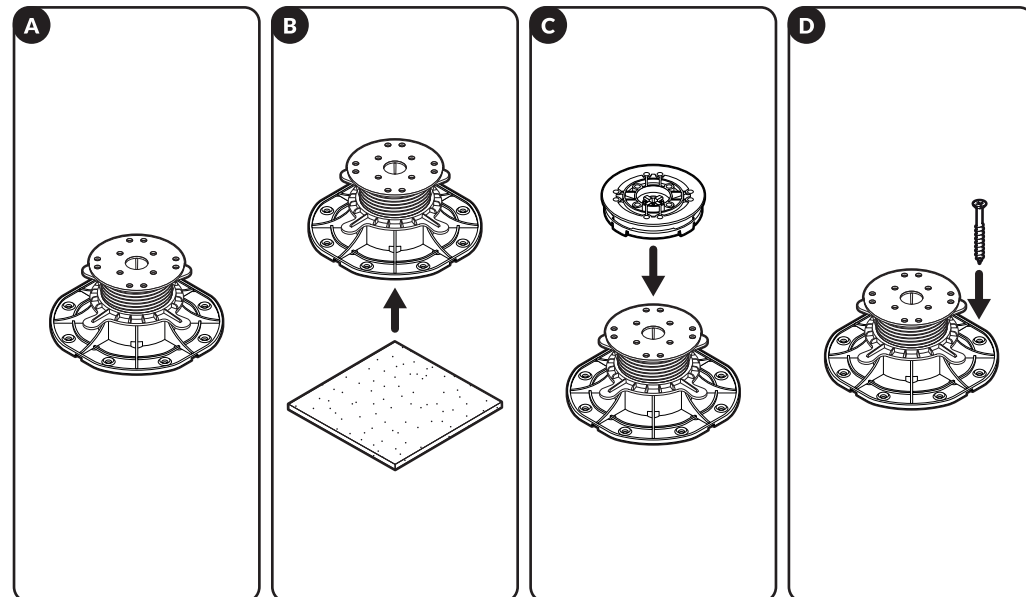


PEDESTALS FOR DECKING - USE JOIST ADAPTER:



ADDITIONAL ACCESSORIES NEEDED DEPEND ON PROJECT TYPE:

- a) Solid base surface (concrete, wood, stone etc.) do not need any additional accessories. We recommend to use rubber shim between tile and pedestal (A).
- b) Sensitive base surface (asphalt, water membrane, XPS) we recommend to use a SBR rubber pad under the pedestal for additional protection (B).
- c) Surface with a slope higher than 1.5% we recommend to use self leveling head (C).
- d) You can fix pedestal to the ground with a fixing plug. Please note if surface allows it and it will not destroy water membrane (D).



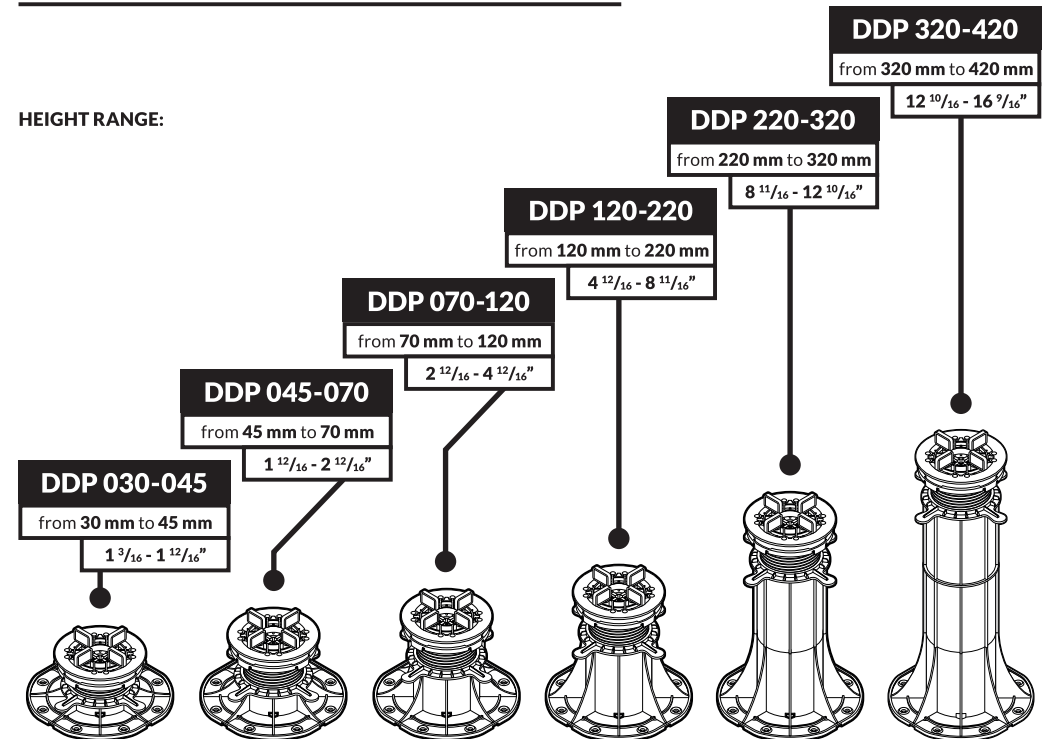
ADJUSTABLE PEDESTALS



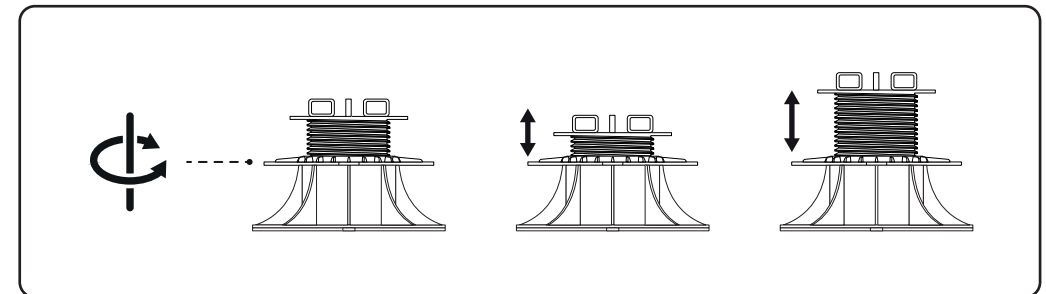
STANDARD Series

QUICK START MANUAL

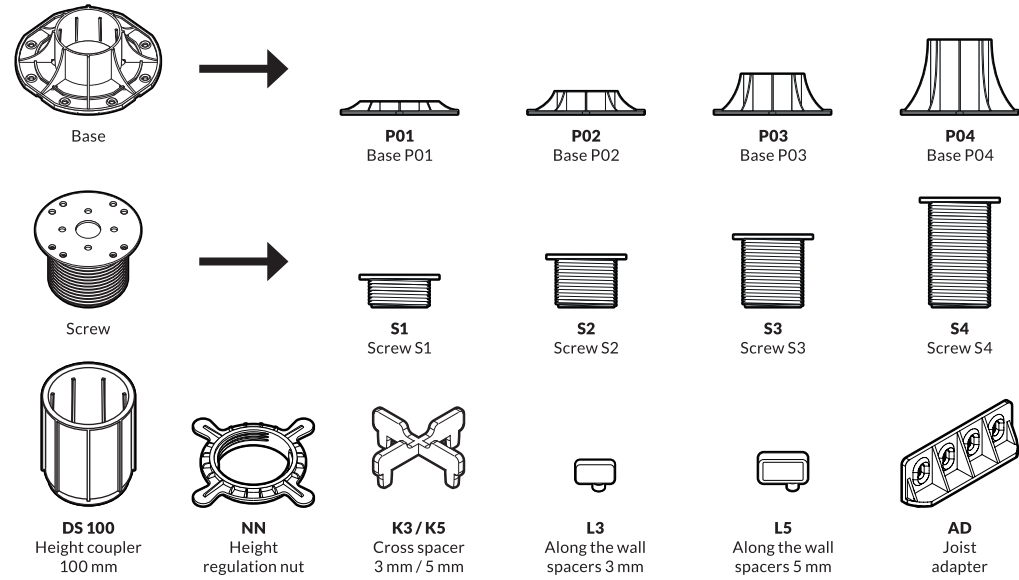
HEIGHT RANGE:



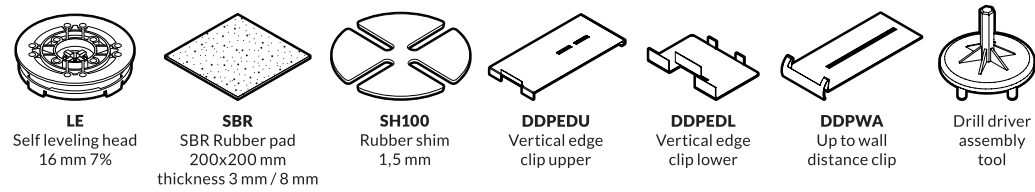
PEDESTAL HEIGHT REGULATION:



PEDESTAL ELEMENTS:



ADDITIONAL ACCESSORIES:

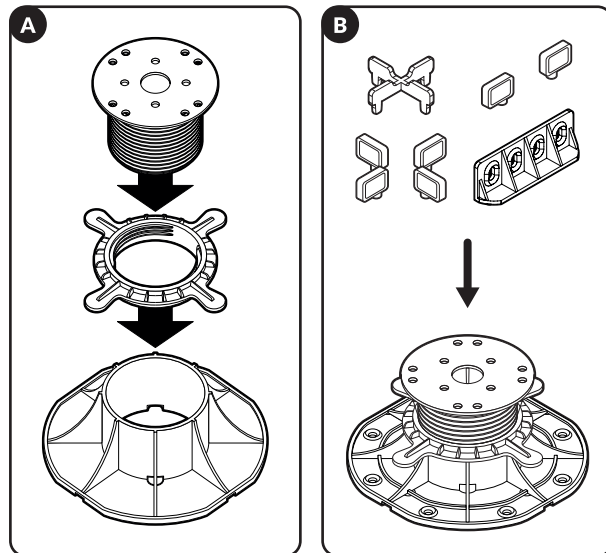


PEDESTALS ASSEMBLY:

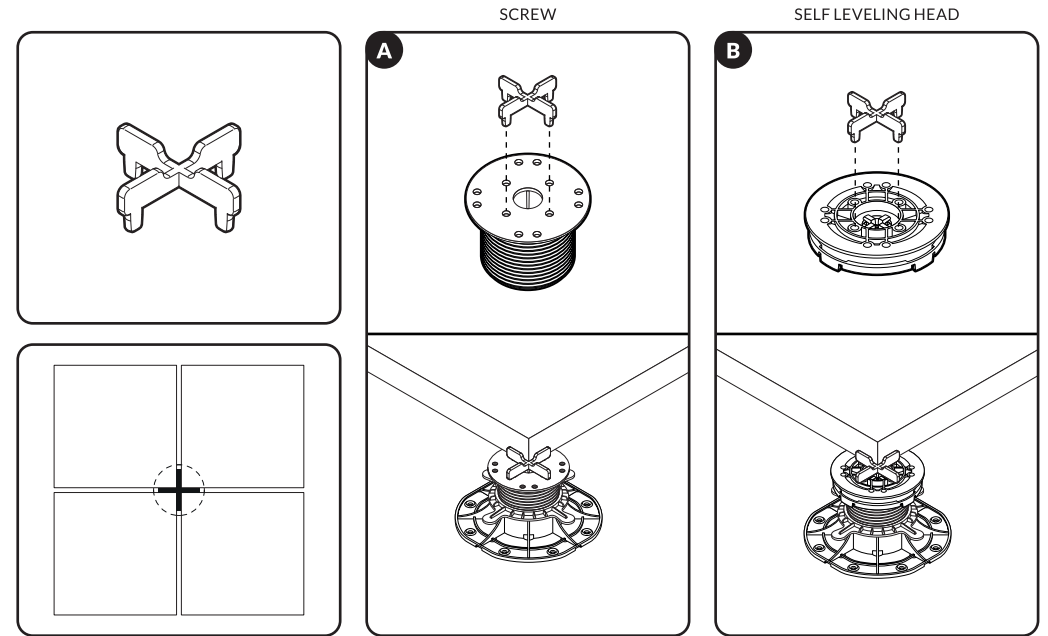
To achieve desired height please see below which element You need to assembly together (A):

- DDP 030-045 = P01 + NN + S1
- DDP 045-070 = P02 + NN + S2
- DDP 070-120 = P03 + NN + S3
- DDP 120-220 = P04 + NN + S4
- DDP 220-320 = P04 + 1x DS 100 + NN + S4
- DDP 320-420 = P04 + 2x DS 100 + NN + S4

Depend on type of the terrace surface (tiles or decking) choose right pedestal head finish. For tiles K3/K5 (L3/L5 along the wall) and for decking joist adapter AD. (B)



PEDESTAL SUPPORT 4 TILES CORNERS - USE CROSS SPACERS FOR TILES:



PEDESTAL ALONG THE WALL - USE INDIVIDUAL SPACERS:

